

L(P)LGZ

系列拉袋下卸料离心机

L(P)LGZ Shaking-bag Centrifuge

L(P)LGZ系列拉袋下卸料离心机
L(P)LGZ Shaking-bag Centrifuge

● 工作原理

卸料过程进行时,刮刀动作,在刮刀的作用下,大部分物料通过转鼓底部的落料孔排至机外,残余料层通过转鼓内部的自动拉袋机构,产生振荡效果,将残余料层彻底清除。

● Working principle

During the process of discharging,the scraper acts,under the impact of it most products are discharged through the blanking hole on the bottom of drum to the outside.The remnant product layer will be removed because of oscillation effect by the influence of automatic shaking-bag mechanism inside the drum.

● 主要特点

- 1.变频调速,全自动控制。
- 2.具有普通立式刮刀下卸料离心机的所有优点。
- 3.拉袋下降、复位全自动操作。
- 4.滤布袋在转鼓内可以上下运动,产生振荡效果,可以彻底清除残余滤饼。
- 5.可以根据需要选择大翻盖型式或者外壳全翻型式。
- 6.可选配残余滤饼清除装置(获国家专利)。

● Main Characteristics

- 1.Automatic frequency speed control.
- 2.It has all advantages of common scraper centrifuge.
- 3.Full-automatic operation for shaking bag falling off and reset.
- 4.The filter bag can be moved up and down inside the drum to produce oscillation effect and remove the remnant filter cake thoroughly.
- 5.Big clamshell or whole shell reversible type are achievable according to users' demands.
- 6.The automatic residual cakes removing device is optional(have owned the national patent).

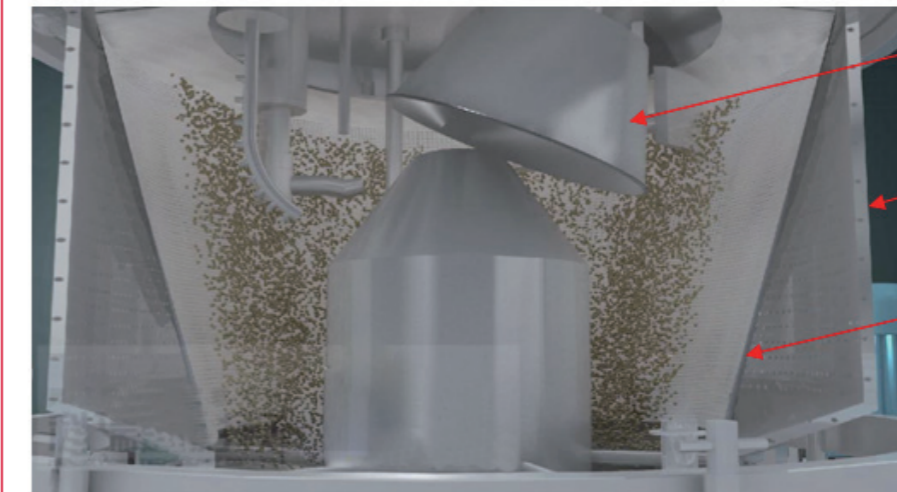


L(P)LGZ

系列拉袋下卸料离心机

L(P)LGZ Shaking-bag Centrifuge

拉袋装置 bag-lifting device

布料器
Material Distributor转鼓
Drum滤袋
Filter bag

● 工作原理

采用气缸驱动,可带动滤袋下边缘上下快速往复运动,使滤袋产生振荡效果,彻底清除残余料层。

拉袋罩底部与落料孔间设置特殊的挡料机构,实践证明能够有效阻挡拉袋动作过程中物料钻进滤布的背面,刮刀不会因此损坏滤布;

拉袋气缸与主轴带轮为同步旋转,没有相对运动,没有易损件。

● Working principle

Driven by cylinder, it can drive the bottom edge of the filter bag to move up and down rapidly, which can make the filter bag shake and completely remove the residual material layer.

A special material blocking mechanism is set between the bottom of the lifting bag cover and the discharging hole. Practice has proved that the material can be effectively blocked from drilling into the back of the filter cloth during the bag pulling operation, and the scraper will not damage the filter cloth.

Pull-bag cylinder and spindle pulley rotate synchronously, without relative motion or vulnerable parts.

L(P)LGZ

系列拉袋下卸料离心机

L(P)LGZ Shaking-bag Centrifuge

● 拉袋驱动方式的选择

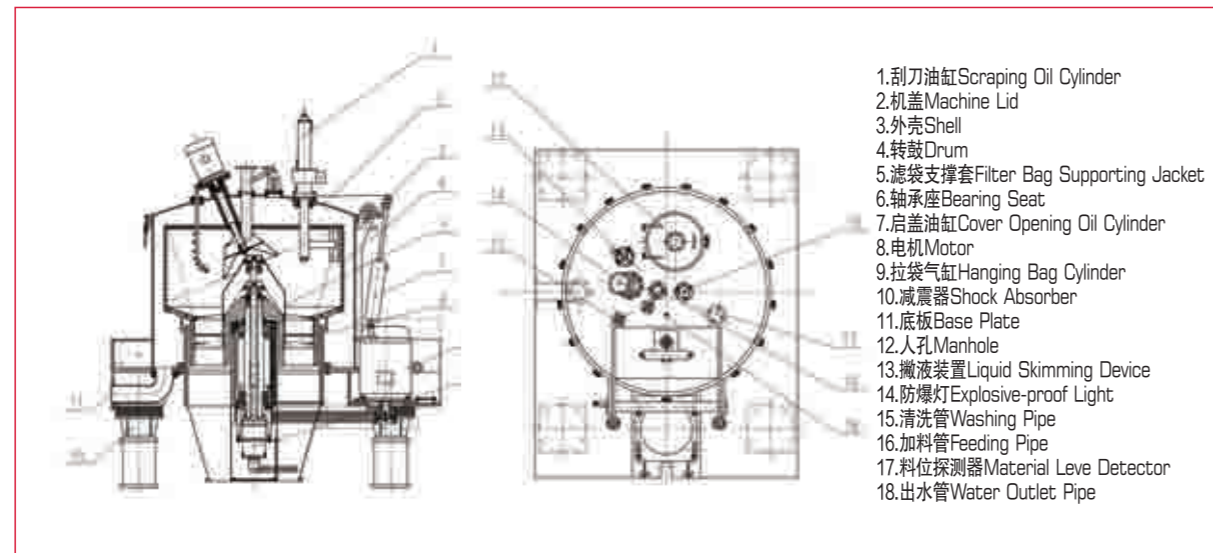
1、气缸内置式：驱动拉袋的气缸设置在主轴皮带轮正下方，与拉杆直接连接。

The cylinder driving the pulling-bag is positioned directly below the main shaft pulley and is directly connected with the pull rod.

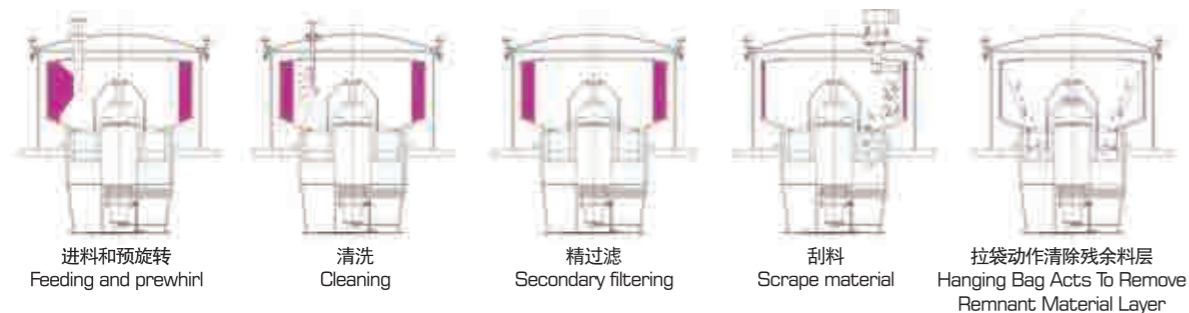
2、气缸外置式：驱动拉袋的气缸设置在轴承座旁侧，通过连杆与拉袋轴连接。

External cylinder type: The cylinder that drives the bag pulling is set at the side of the bearing seat, and is connected with the bag pulling shaft through the connecting rod.

● 结构示意图 Structure Sketch Map



● 工作过程示意图 Working Process Sketch Map



L(P)LGZ

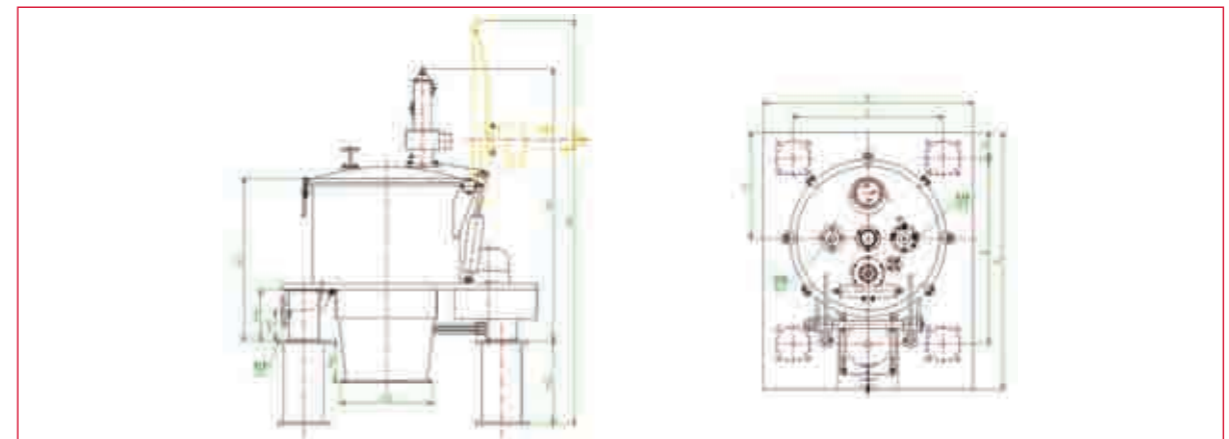
系列拉袋下卸料离心机

L(P)LGZ Shaking-bag Centrifuge

● L(P)LGZ系列离心机主要技术参数 L(P)LGZ Series Centrifuge Main Parameters

| 项目Item | 型号 Model | L(P)LGZ-800 | L(P)LGZ-1000 | L(P)LGZ-1250 | L(P)LGZ-1350 | L(P)LGZ-1400 | L(P)LGZ-1600 | L(P)LGZ-1680 | L(P)LGZ-1800 |
|--|----------|----------------|----------------|----------------|----------------|----------------|----------------|----------------|----------------|
| 转鼓直径 Drum diameter(mm) | | 800 | 1000 | 1250 | 1350 | 1400 | 1600 | 1680 | 1800 |
| 转鼓高度 Drum Height(mm) | | 400 | 500 | 500/630 | 630 | 700 | 800/720 | 740 | 800 |
| 转鼓容积 Drum volume(L) | | 80 | 165 | 310/400 | 445 | 560 | 800/720 | 900 | 1000 |
| 装料限量 Loading capacity(Kg) | | 100 | 210 | 400/520 | 534 | 672 | 1000/870 | 1125 | 1200 |
| 最高转速 Max. Speed(r/min) | | 1500 | 1200 | 1000/1200 | 1200 | 1150 | 850 | 850 | 800 |
| 最大分离因素 Maximum separating factor | | 1007 | 805 | 698/1006 | 1086 | 1033 | 646 | 646 | 645 |
| 电机功率 Motor power (Kw) | | 7.5 | 15 | 18.5/22 | 30 | 30 | 37 | 37 | 55 |
| 外形尺寸(含减震器) Size (including shock absorber) (mm) | | 1700×1400×2064 | 2100×1600×2200 | 2300×1800×2500 | 2600×2000×2900 | 2600×2000×3200 | 3000×2400×3510 | 3000×2400×3100 | 3230×2630×3850 |
| 机器重量 Weight(Kg) | | 2100 | 3800 | 5600 | 6000 | 6500 | 12000 | 12500 | 16200 |

随着科技的进步，我们保留更改的权利 All right is reserved for amendment with improvement of technology

● L(P)LGZ立式拉袋式下卸料离心机外形尺寸图
L(P)LGZ Shaking-bag Centrifuge Outline Dimensional Drawing

| 型号 Model | 代号 Code | A | B | C | E | F | G | H0 | H1 | H2 | H3 | H4 | H5 | D0 | D1 | D2 | D3 |
|-------------|------------|------|------|------|------|------|-----|------|------|-----|------|------|-----|--------|-------|------|------|
| L(P)LGZ800 | | 1700 | 1400 | 1000 | 1230 | 700 | 170 | 2670 | 1800 | 500 | 1050 | 320 | 180 | φ 700 | DN80 | DN50 | DN20 |
| L(P)LGZ1000 | | 2100 | 1600 | 1200 | 1600 | 800 | 180 | 3220 | 2600 | 400 | 1390 | 340 | 140 | φ 820 | DN100 | DN50 | DN20 |
| L(P)LGZ1250 | | 2300 | 1800 | 1500 | 1700 | 880 | 180 | 3452 | 2690 | 500 | 1275 | 340 | 140 | φ 890 | DN125 | DN50 | DN20 |
| L(P)LGZ1350 | | 2600 | 2000 | 1700 | 2000 | 1070 | 150 | 3980 | 2890 | 400 | 1690 | 475 | 260 | φ 890 | DN125 | DN50 | DN25 |
| L(P)LGZ1400 | | 2600 | 2000 | 1530 | 1910 | 1070 | 235 | 3680 | 3200 | 450 | 1800 | 610 | 400 | φ 930 | DN125 | DN65 | DN25 |
| L(P)LGZ1600 | | 3000 | 2400 | 1900 | 2300 | 1300 | 250 | 4650 | 3510 | 450 | 2080 | 610 | 410 | φ 1100 | DN150 | DN65 | DN25 |
| L(P)LGZ1800 | | 3230 | 2630 | 2124 | 2527 | 1340 | 253 | 4890 | 3850 | / | 2630 | 1000 | / | φ 1020 | DN250 | DN80 | DN25 |

随着科技的进步，我们保留更改的权利 All right is reserved for amendment with improvement of technology